

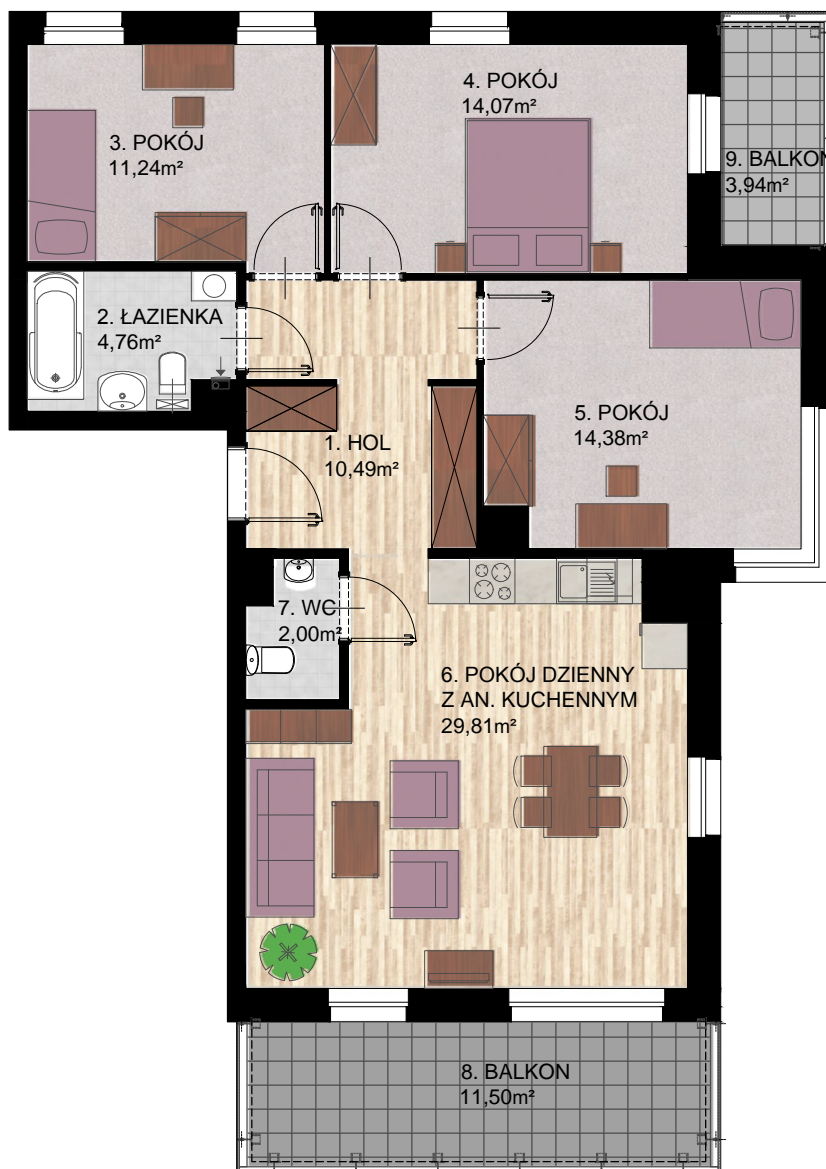
# ATRIUM

## P A R K



Mieszkanie D37

**90,35 m<sup>2</sup>**



### D37

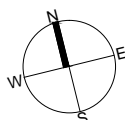
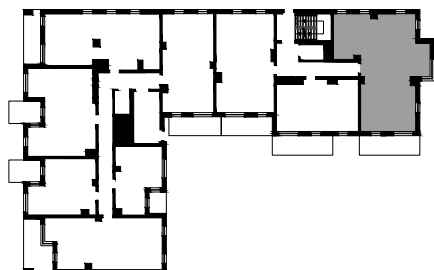
POWIERZCHNIA UŻYTKOWA MIESZKANIA 90,35 m<sup>2</sup>

SUMA POWIERZCHNI POMIESZCZEŃ 1-7 86,75 m<sup>2</sup>

1 HOL	10,49m <sup>2</sup>
2 ŁAZIENKA	4,76m <sup>2</sup>
3 POKÓJ	11,24m <sup>2</sup>
4 POKÓJ	14,07m <sup>2</sup>
5 POKÓJ	14,38m <sup>2</sup>
6 POKÓJ DZIENNY Z AN. KUCH.	29,81m <sup>2</sup>
7 WC	2,00m <sup>2</sup>
8 BALKON	11,50m <sup>2</sup>
9 BALKON	3,94m <sup>2</sup>

PIĘTRO 3

1m 2m 3m 4m 5m



**arkada**  
INVEST