

# ATRIUM

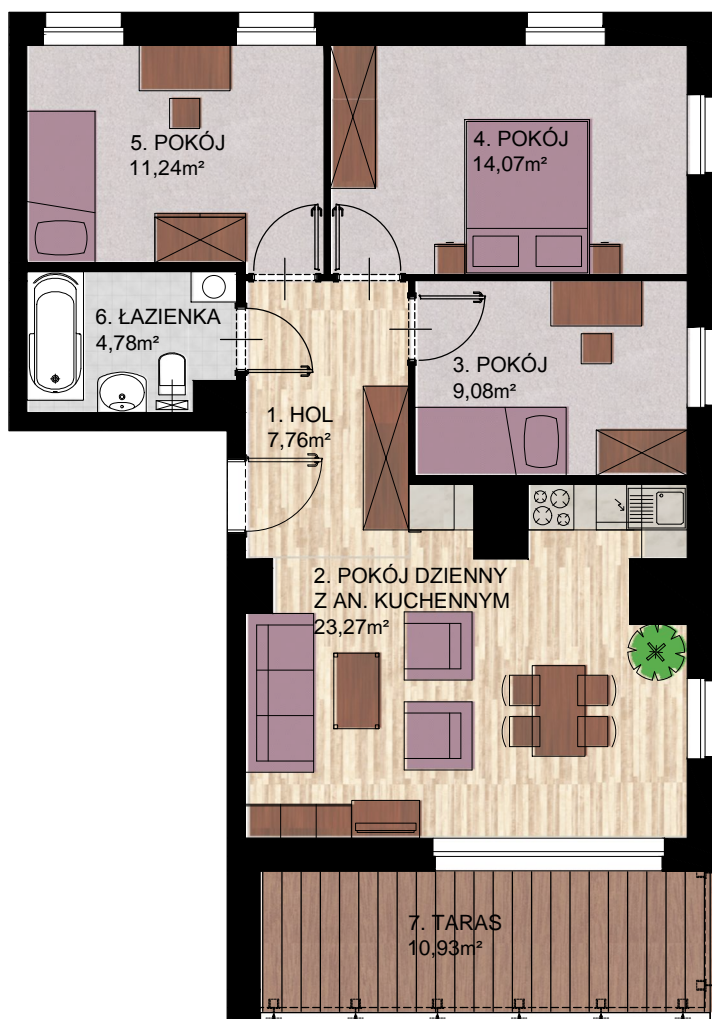
## P A R K



Mieszkanie D51

**74,24 m<sup>2</sup>**

PREMIUM



### D51

POWIERZCHNIA UŻYTKOWA  
MIESZKANIA 74,24 m<sup>2</sup>

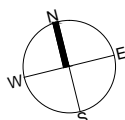
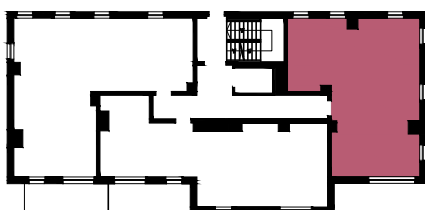
SUMA POWIERZCHNI  
POMIESZCZEŃ 1-6 70,20 m<sup>2</sup>

1 HOL	7,76m <sup>2</sup>
2 POKÓJ DZIENNY Z AN. KUCH.	23,27m <sup>2</sup>
3 POKÓJ	9,08m <sup>2</sup>
4 POKÓJ	14,07m <sup>2</sup>
5 POKÓJ	11,24m <sup>2</sup>
6 ŁAZIENKA	4,78m <sup>2</sup>

6 TARAS 9,78m<sup>2</sup>



### PIĘTRO 7



**arkada**  
INVEST